



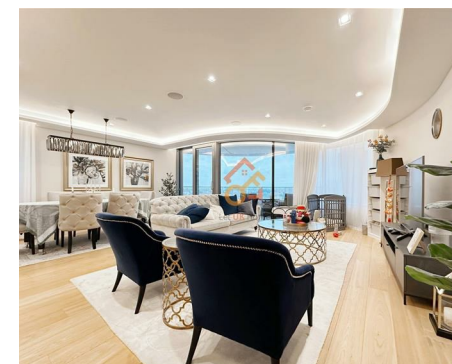
Let **UK** Home

3 Bedrooms

Flat

Located in London

£9,300 Per Month



info@letukhome.co.uk

<https://www.letukhome.co.uk/>

01795 358 886



24 Albert Embankment London

SE1 7GJ



Let UK Home are excited to offer this stunning 3-bedroom apartment in the highly sought after The Corniche development.

This property comprises a large bright open plan kitchen and living room leading to a large private balcony with great views, three double bedrooms with wardrobes and en-suites, a TV/study room, a toilet room and ample storage. A virtual viewing is provided.

Residents of The Corniche will enjoy access to an unparalleled suite of amenities, including a gym, spa, swimming pool, cinema and bowling alley as well as a residents' club and bar with stunning roof terrace overlooking Big Ben and the Houses of Parliament.

The Corniche is ideally located along the River Thames, offering easy access to Westminster and Waterloo. The vibrant Southbank area, known for its array of restaurants, bars, and cultural venues, is just a short walk away. Excellent transport links are provided by nearby Vauxhall Station, connecting residents to the rest of London with ease.

24 Albert Embankment London

£9,300 Per Month



- 19th Floor
- 24h Security
- Swimming Pool
- Cinema & Game Room
- Virtual Viewing Available
- Concierge Service
- The Spa
- The Gym
- Residents Lounge



The floor plan shows a 3-bedroom house with a TV/study, living room, kitchen, and balcony. The layout includes three bedrooms, a TV/study, a living room, a kitchen, a bathroom, and a balcony. The plan is oriented with North at the top, as indicated by the compass rose. The key identifies symbols for Wardrobe (W), Cupboard (C), Unit (U), and Secondary Front Entrance (P.B.).

KEY

- W Wardrobe
- C Cupboard
- U Unit
- P.B. Secondary Front Entrance

TYPE		
Apartment		
Level		
Living Room	6.60 x 8.36m	21'8" x 27'5"
Kitchen	4.16 x 3.55m	13'8" x 11'8"
TV / Study	3.42 x 3.45m	11'3" x 11'4"
Bedroom 1	6.60 x 3.47m	21'8" x 11'5"
Bedroom 2	3.47 x 5.43m	11'5" x 17'10"
Bedroom 3	3.36 x 6.82m	11'1" x 22'5"
Balcony	4.84 x 2.01m	15'11" x 6'7"
Total Internal Area	189.31 m²	2,037.7 ft²
Total External Area	6.24 m²	67.1 ft²



Let **UK** Home

3F 2 Eastbourne Terrace

Paddington

London

W2 6LG

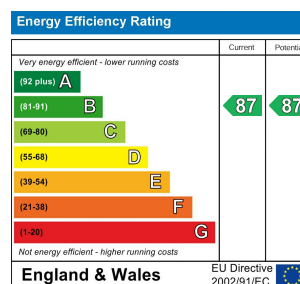
01795 358 886

info@letukhome.co.uk

Council Tax Band: H

Local Authority:

Agents Note: Whilst every care has been taken to prepare these particulars, they are for guidance purposes only. All measurements are approximate and are for general guidance purposes only and whilst every care has been taken to ensure their accuracy, they should not be relied upon and potential buyers/tenants are advised to recheck the measurements.



<https://www.letukhome.co.uk/>